

## SAINT MICHAEL AND ALL ANGELS CONSTRUCTION HIGHLIGHTS



### PROJECT TEAM

THE BECK GROUP – PROJECT LEADER  
Graham Comstock  
PRITCHARD ASSOCIATES - Representative  
Brett Ratliff  
SAINT MICHAEL AND ALL ANGELS  
Colleen O’Hara



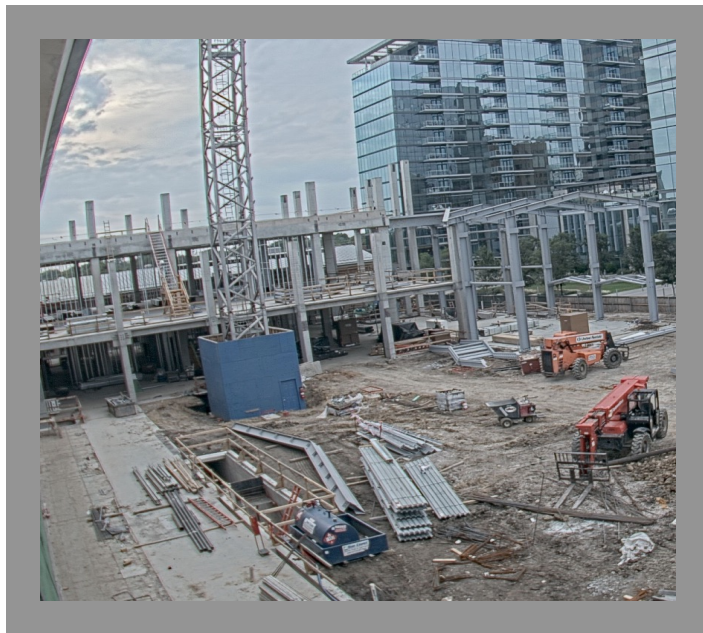
### **First Two Weeks of May:**

Progress on Structure Continues

- Concrete structure is complete
- Structural steel begins
- Basement overhead rough-in begins

### **Last Two Weeks of May:**

- Structural steel completes 3 of 14
- Exterior framing begins
- Interior framing begins.



### **Looking Forward...**

As we move into June, the structural steel trade partner will continue to make progress on topping out the structure. Additionally, trades will continue with MEP rough-in on all levels and interior framing will continue.