

SAINT MICHAEL AND ALL ANGELS CONSTRUCTION HIGHLIGHTS



PROJECT TEAM

THE BECK GROUP – PROJECT LEADER
Graham Comstock
PRITCHARD ASSOCIATES - Representative
Brett Ratliff
SAINT MICHAEL AND ALL ANGELS
Colleen O’Hara



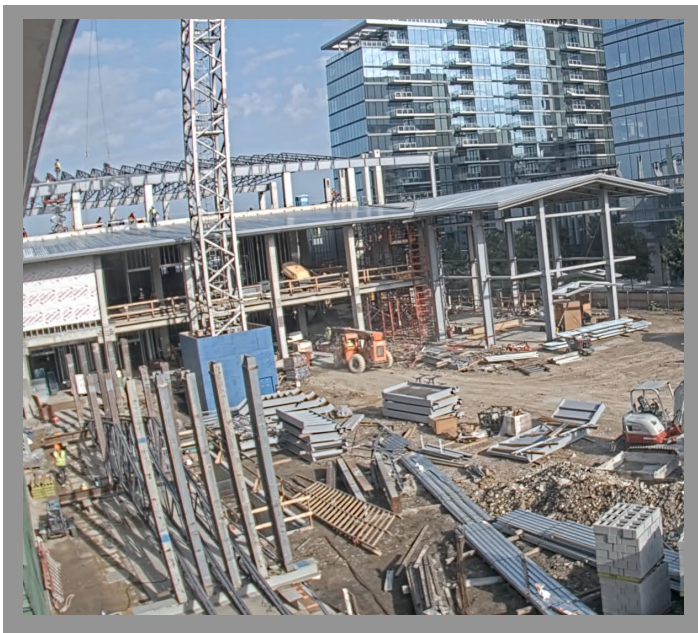
First Two Weeks of June:

Progress on Structure Continues

- Structural steel continues
- Exterior wall framing continues
- Overhead MEP begins

Last Two Weeks of June:

- Structural steel tops out
- Interior wall framing continues
- MEP equipment is set (AHUs)



Looking Forward...

As we move into July, the structure will be complete, and the exterior façade will begin to take shape. We will begin to see waterproofing, masonry, etc. Additionally, trades will continue with MEP rough-in on all levels and interior framing will continue.