

SAINT MICHAEL AND ALL ANGELS CONSTRUCTION HIGHLIGHTS



PROJECT TEAM

THE BECK GROUP – PROJECT LEADER
Graham Comstock
PRITCHARD ASSOCIATES - Representative
Brett Ratliff
SAINT MICHAEL AND ALL ANGELS
Colleen O’Hara



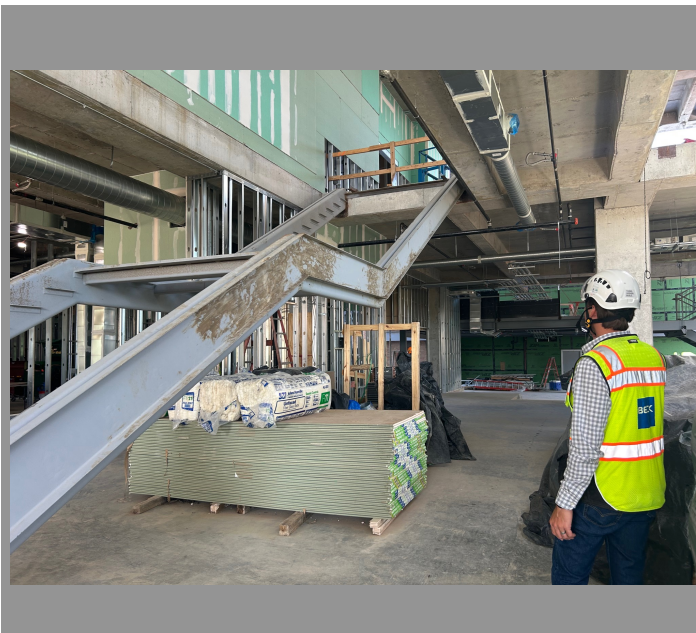
First Two Weeks of July:

Progress on Structure Continues

- Roof decking is set
- Basement framing complete
- Basement rough-in complete

Last Two Weeks of July:

- Level 1 framing is complete
- Level 1 rough-in complete
- Level 2 MEP roof poured



Looking Forward...

As we move into August, the structure will be complete, and the exterior wall assemblies will begin to take shape. You’ll see brick, glass, and roofing begin on site during the month of August. The tower crane will come down at the end of the month.